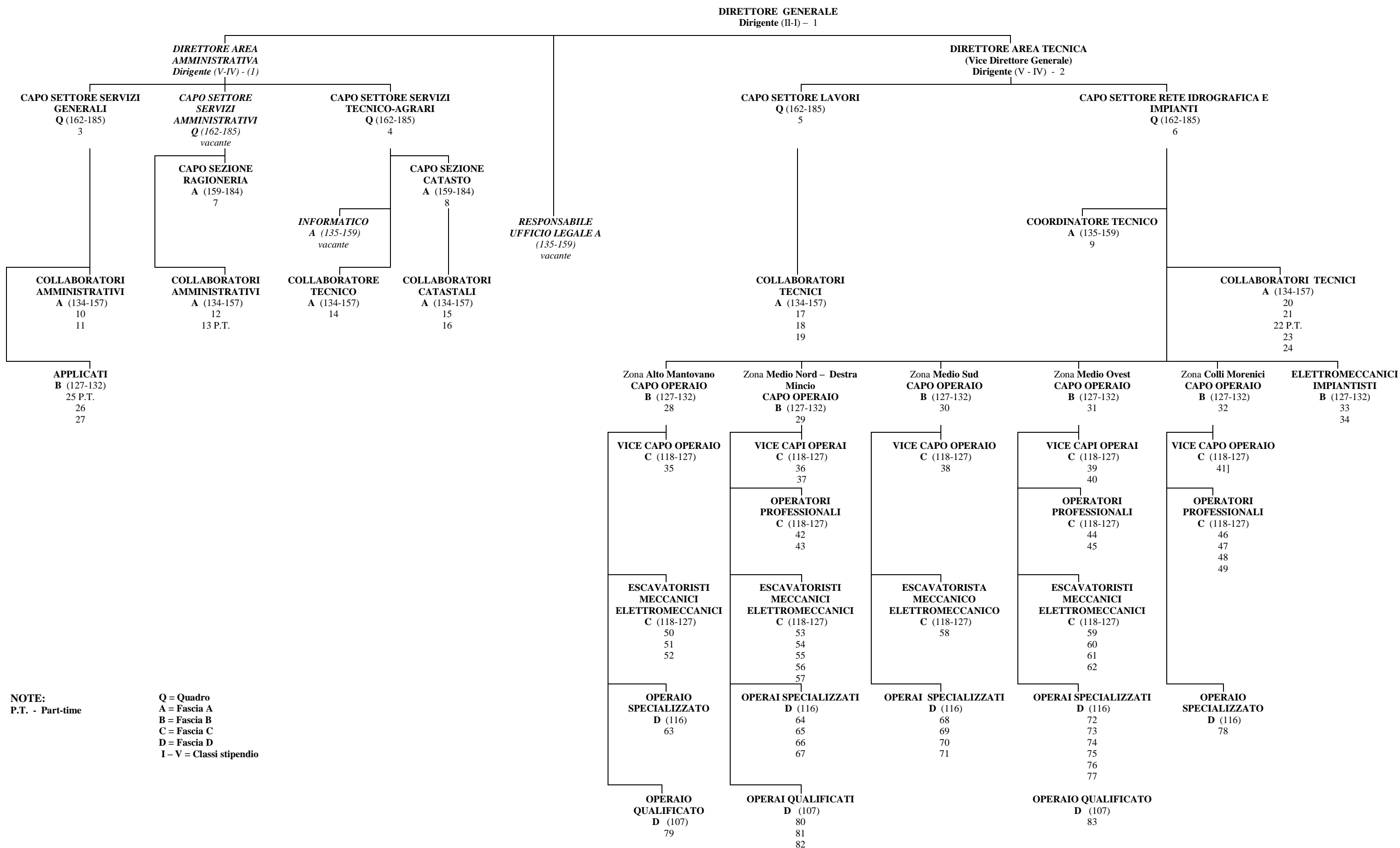


**DIPENDENTI FISSI - ORGANIGRAMMA 01/02/2016** (83 dipendenti di cui 3 part-time)

Qualifica (classe/parametro retributivo C.C.N.L.)



**NOTE:**  
P.T. - Part-time

Q = Quadro  
A = Fascia A  
B = Fascia B  
C = Fascia C  
D = Fascia D  
I - V = Classi stipendio